



Eastern
Ornamental
Aluminum[®]

ORNAMENTAL ALUMINUM FENCE &
RAILING FOR ALL APPLICATIONS



HIDDEN SCREW TECHNOLOGY

Screws provide the strongest, rattle-free connection between pickets and fence rails. Screws can, however, become a major problem over time when they loosen and back out of the pickets. To eliminate this critical problem, Eastern Ornamental Aluminum® fences utilize a unique "Aluminum Feature Strip" that covers the assembly screws and locks them in place. The paint on exposed assembly screws can easily crack or peel leaving unsightly silver screw heads all over the fence section. With Eastern Ornamental's Hidden Screw Technology, all assembly screws will be forever "out of sight-out of mind!"

Hidden Screw Technology



RACKABILITY

The ability to "rack" or smoothly follow changes in terrain is built into every Eastern Ornamental Aluminum fence section. This ensures a clean and beautiful fence line.

ESTATE GATES



Matching driveway gates are also available. Estate Gates are manufactured by Eastern using 3/4" square pickets welded in a U-Frame design for maximum strength and durability. Add circles, finials or scrolls to further enhance the beauty of these elegant entrance gates.

SPECIAL SIZED GATES

Need a special size gate to fit between existing columns? Eastern Ornamental Aluminum Fence® can manufacture special size openings or special heights to meet a wide variety of non-standard gate requirements.

SERVICE

Eastern Ornamental Aluminum® is dedicated to delivering the highest quality product and service at the fastest turnaround times in the industry. (Please see the Eastern Ornamental® **QuickShip**® brochure for more information).



BOCA Pool Code Good Neighbor Recyclable No Maintenance Budget Friendly All Weather **QuickShip**® Hidden Screws Avail. in Bronze

COVER: EO40V-BK Shown with Accent Gate (EOGF440VA-BK), 4" Gate Posts, 4" Ball Caps (EOBC4-BK), and BOCA approved pool latch (MLDD-BK)





SHOWN (BOTH IMAGES): EO4101-BK, 2" Posts, 2" Ball Caps (EOBC2-BK)

4' STYLE 101



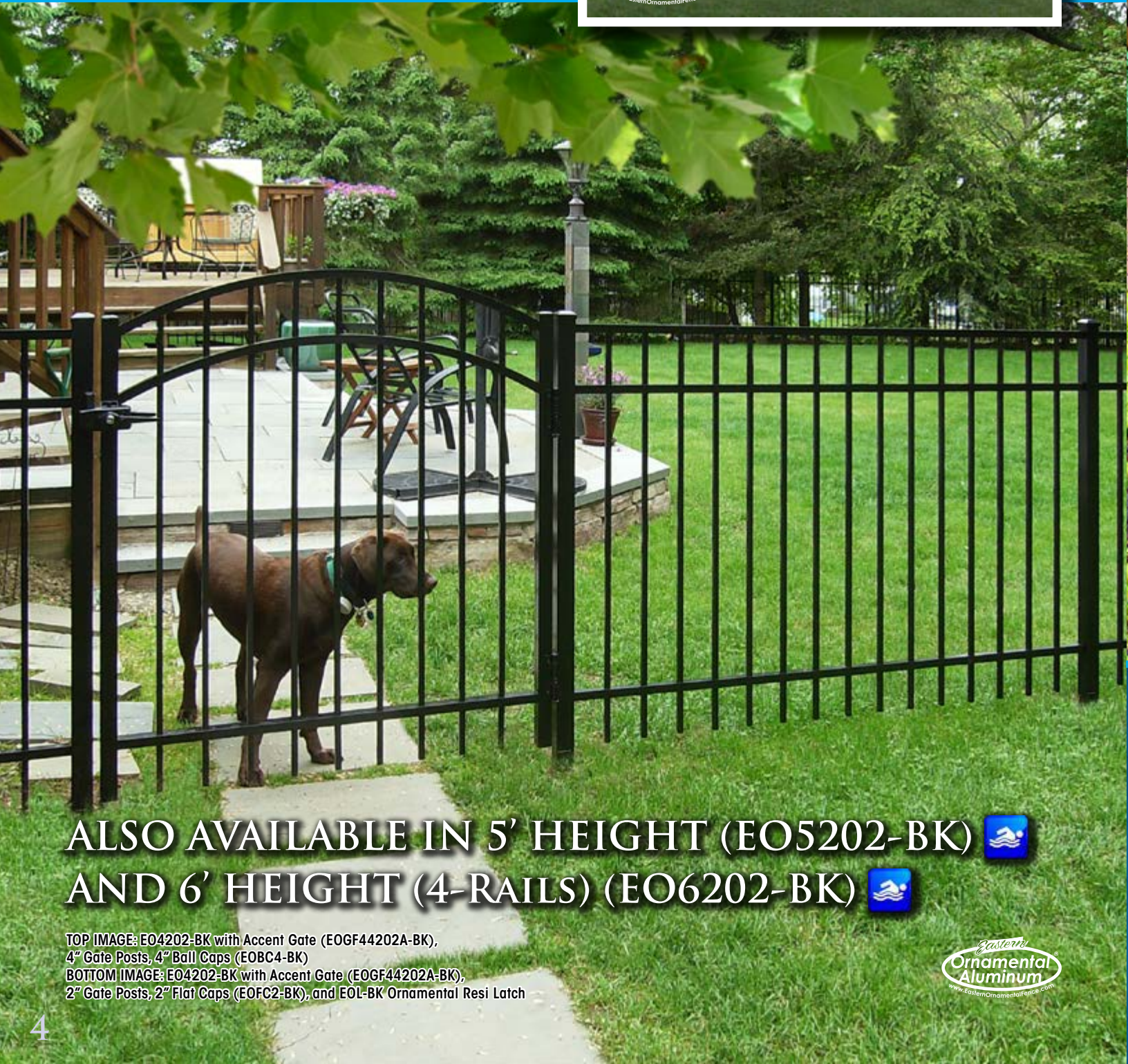
EO4101-BK is a 48" high three rail ornamental aluminum fence that duplicates the classic wrought iron fence look with an attractive pressed point at the top of each picket.



4' STYLE 202



EO4202-BK is a 48" high (EO5202-BK = 60"H 🌩️ & EO6202-BK = 72"H 🌩️) three rail fence with a smooth top rail that covers each of the fifteen pickets. **Decorative arched accent gates** are also available to enhance the beauty of any project.



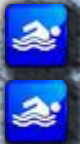
ALSO AVAILABLE IN 5' HEIGHT (EO5202-BK) 
AND 6' HEIGHT (4-RAILS) (EO6202-BK) 

TOP IMAGE: EO4202-BK with Accent Gate (EOGF44202A-BK),
4" Gate Posts, 4" Ball Caps (EOBC4-BK)
BOTTOM IMAGE: EO4202-BK with Accent Gate (EOGF44202A-BK),
2" Gate Posts, 2" Flat Caps (EOFC2-BK), and EOL-BK Ornamental Resi Latch





ALSO AVAILABLE IN 5' HEIGHT (EO5200-BK) AND 6' HEIGHT (4-RAILS) (EO6200-BK)



TOP IMAGE: EO4200-BK with 2" Flat Caps (EOFC2-BK)
 BOTTOM IMAGE: EO4200-BK with 2" Ball Caps (EOBC2-BK)



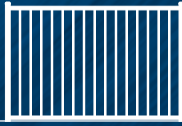
4' STYLE 200



EO4200-BK is a 48" high (EO5200-BK = 60"H & EO6200-BK) three rail fence that combines the best features of the EO4101 and EO4202. A smooth top rail covers an alternating arrangement of square and pressed point pickets. Arched accent gates are also available.



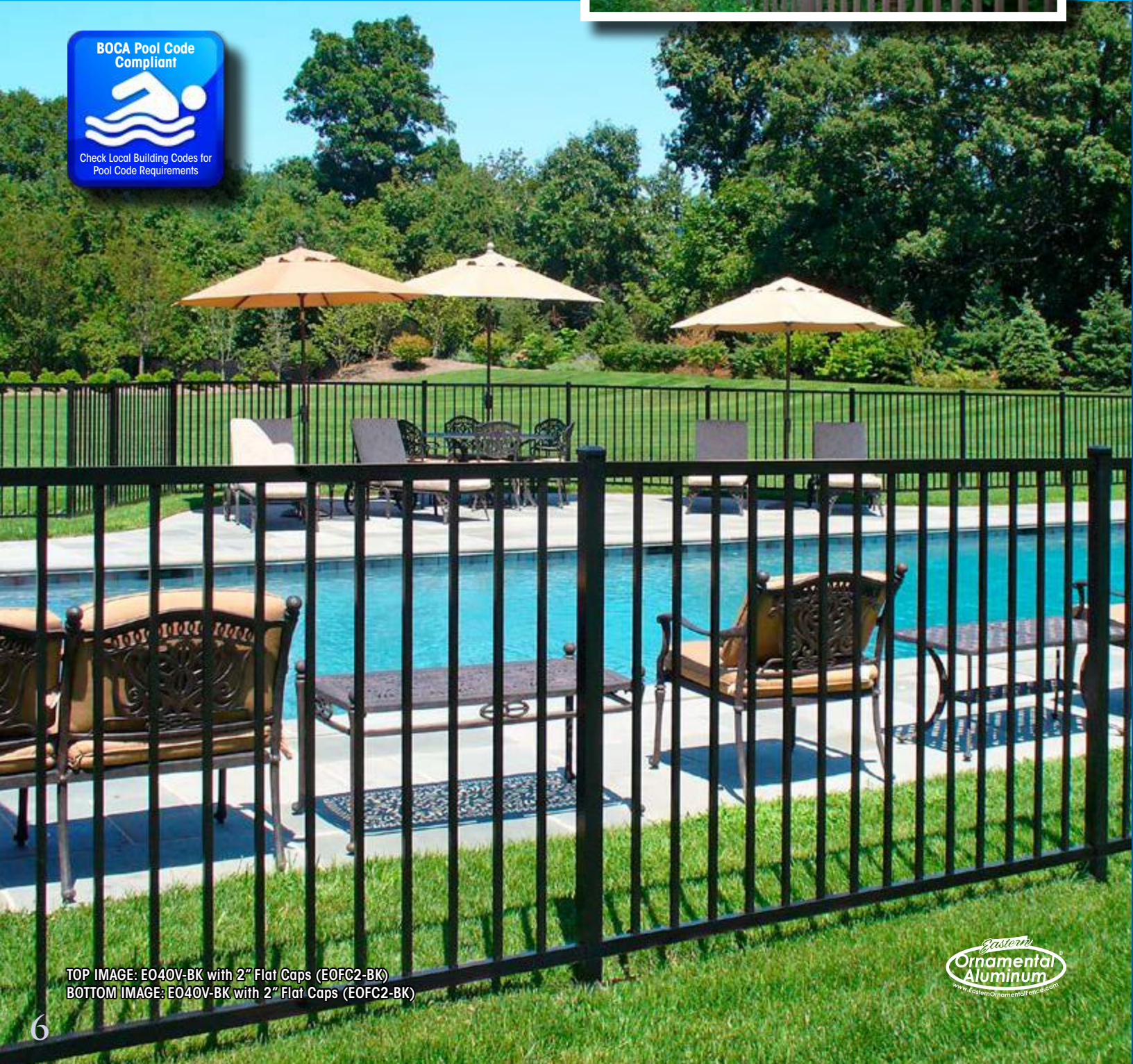
4' OVATION



ALSO AVAILABLE IN BRONZE

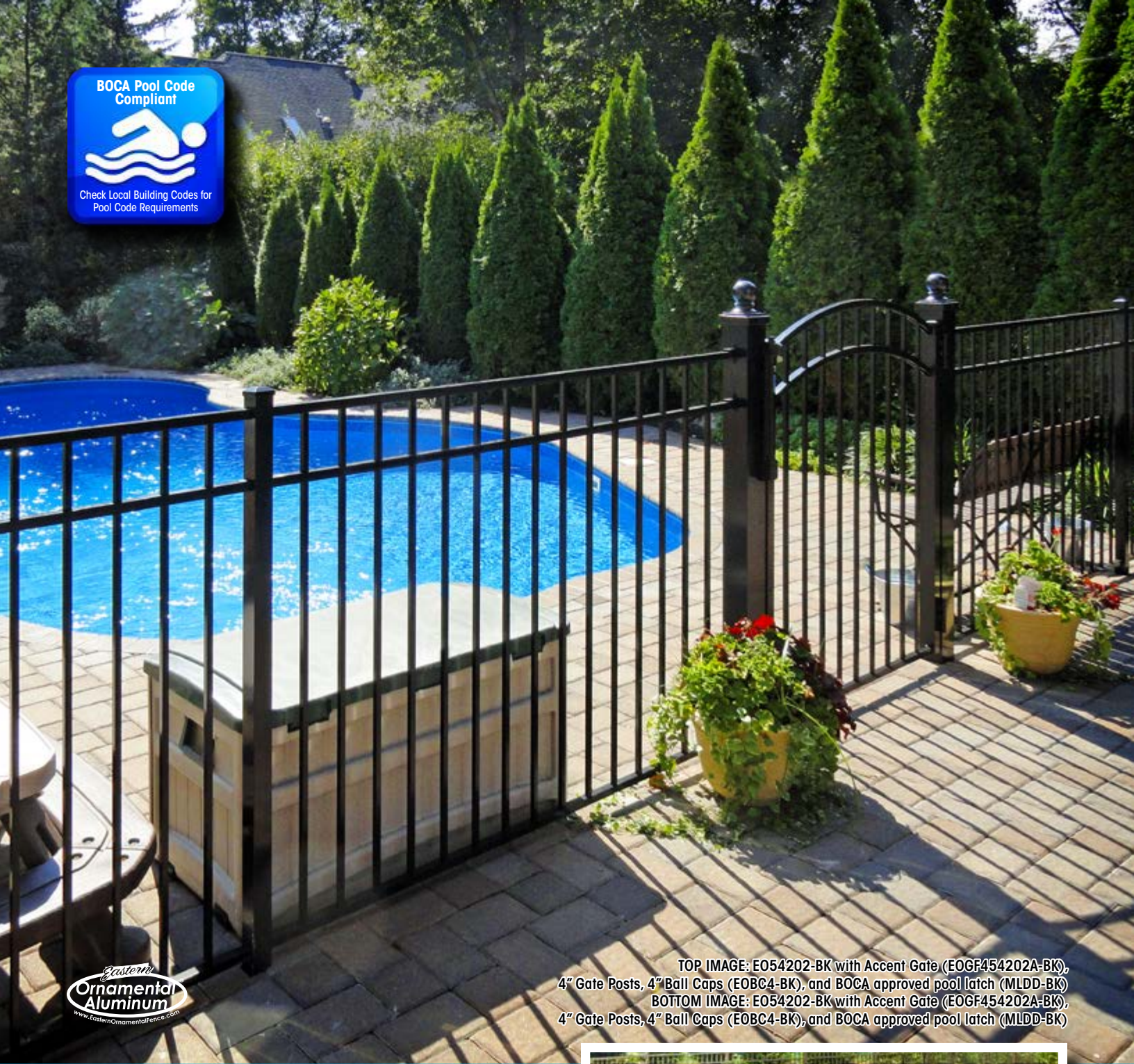


EO40V-BK/BZ is a 48" high two rail fence that meets the national BOCA pool code requirements and includes bigger pickets and rails for greater strength. Decorative arched accent gates are also available.



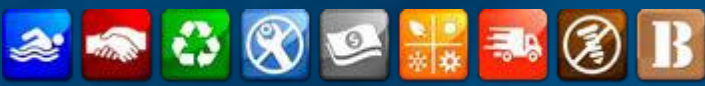
TOP IMAGE: EO40V-BK with 2" Flat Caps (EOFC2-BK)
BOTTOM IMAGE: EO40V-BK with 2" Flat Caps (EOFC2-BK)





TOP IMAGE: E054202-BK with Accent Gate (EOGF454202A-BK), 4" Gate Posts, 4" Ball Caps (EOBC4-BK), and BOCA approved pool latch (MLDD-BK)
 BOTTOM IMAGE: E054202-BK with Accent Gate (EOGF454202A-BK), 4" Gate Posts, 4" Ball Caps (EOBC4-BK), and BOCA approved pool latch (MLDD-BK)

54" STYLE 202



E054202-BK/BZ is a 54" high three rail fence that meets the national BOCA pool requirement and offers a smooth top rail that covers each of the pickets. Decorative arched accent gates are also available.



54" STYLE 200



EO54200-BK/BZ is a 54" high three rail fence that meets the national BOCA pool code requirements. It has smooth top rail covers and an alternating arrangement of square and pressed point pickets. Decorative arched accent gates are also available.

ALSO AVAILABLE IN BRONZE



ALSO AVAILABLE IN BRONZE

TOP IMAGE: EO54200-BK with Matching Gate (EOGF454200-BK), 2" Gate Posts, 2" Flat Caps (EOFC2-BK), and BOCA approved pool latch (MLDD-BK)
 BOTTOM IMAGE: EO54200-BK with 2" Flat Caps (EOFC2-BK)





AVAILABLE
IN BLACK,
BRONZE,
& WHITE

Eastern Ornamental Railing is available in both 6' & 8' wide sections, and 36" & 42" heights. EOR6-36/42 or EOR8-36/42. For stair installs, use the same code as corresponding straight section, then simply order stair-rail brackets and rack the sections to fit.

RAILING

EOR8-36/42



Eastern Ornamental Railing has fast become one of the most respected ornamental aluminum products in the railing industry. Your beautiful new matte finish railing will add the perfect accent to your stoop, deck, patio, or high rise. In accordance to ICC-ES AC273, you can start installing Eastern Ornamental Railing on any floor today.



GATES

Eastern Ornamental gates feature an all welded design for maximum strength. You can choose a straight top design that matches the fencing or a decorative arched top design that gracefully rises above the fence height to accent the gate area. Special size openings are also available to fit between existing columns or non-standard opening requirements.



48" Wide - EOGF440VA-BK ACCENT GATE

48"W x 48"H - EOGF44101-BK 60"W x 48"H - EOGF54101-BK	48"W x 48"H - EOGF44101A-BK 60"W x 48"H - EOGF54101A-BK	48"W x 48"H - EOGF44202-BK 60"W x 48"H - EOGF54202-BK 48"W x 60"H - EOGF45202-BK 60"W x 60"H - EOGF55202-BK	48"W x 48"H - EOGF44202A-BK 60"W x 48"H - EOGF54202A-BK 48"W x 60"H - EOGF45202A-BK 60"W x 60"H - EOGF55202A-BK	48"W x 48"H - EOGF44200-BK 60"W x 48"H - EOGF54200-BK 48"W x 60"H - EOGF45200-BK 60"W x 60"H - EOGF55200-BK	48"W x 48"H - EOGF44200A-BK 60"W x 48"H - EOGF54200A-BK 48"W x 60"H - EOGF45200A-BK 60"W x 60"H - EOGF55200A-BK
48"W x 48"H - EOGF440V-BK 60"W x 48"H - EOGF540V-BK	48"W x 48"H - EOGF440VA-BK	48"W x 54"H - EOGF454202-BK 60"W x 54"H - EOGF554202-BK	48"W x 54"H - EOGF454202A-BK	48"W x 54"H - EOGF454200-BK 60"W x 54"H - EOGF554200-BK	48"W x 54"H - EOGF454200A-BK

ESTATE AND INDUSTRIAL SLIDE GATES

Eastern Ornamental Aluminum® Estate and Industrial Gates come in a variety of heights and openings. Estate Driveway Gates feature 3/4" square pickets in an all welded U-Frame design. Industrial Gates feature 1" square pickets. All gates are available in double drive or slide gates. 4" posts are recommended for gates over 29 sq. ft. in size (especially when an operator is to be used). 6" posts are recommended for single gates over 45 sq. ft. in size. **Add circles, finials or scrolls to further enhance the beauty of these elegant entrance gates.**

ALL ESTATE GATES COME WITH FLUSH BOTTOM
ALL ARCHED ESTATE GATES RISE 1' ABOVE ORDER HEIGHT
CUSTOM HEIGHTS AND EXPOSED BOTTOM GATES AVAILABLE

PICKET TOPS

STANDARD	OPTIONAL
	A B

A	C	E	F
B	D	G	

EASTERN ORNAMENTAL ALUMINUM® INTERNAL SLIDE GATES ALSO AVAILABLE

FENCE ACCESSORIES

"You be the designer!" Feel free to Mix 'n' Match post caps, scrolls, rings and latches to create the most attractive combination for your outdoor living space.



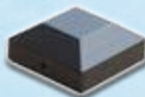
EOBC2-BK/BZ & EOBC250-BK
2" & 2-1/2" Ball Cap



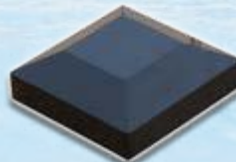
EOBC4-BK/BZ
4" Ball Cap



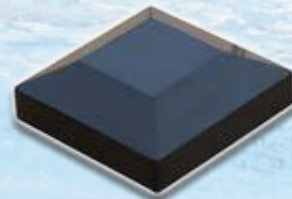
V22P
2" or 2-1/2"
Solar Light Cap



EOFC2-BK/BZ & EOFC250-BK/BZ
2" & 2-1/2" Flat Cap



EOFC4-BK/BZ
4" Flat Cap



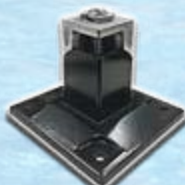
EOFC6-BK/BZ
6" Flat Cap



EOSS1-BK/BZ
SS-1 Scroll



EOORINGS-BK/BZ
Ornamental Rings



EODMC2-BK/BZ
Deck Mount Casting 2"



EODR-BK
Ornamental Drop Rod

LATCHES



EOL-BK
Ornamental Resi Latch



EORWM-BK/BZ
Resi Wall Mount



EOARWM-BK/BZ
Adjustable Resi Wall Mount



EOOWM-BK/BZ
Ovation Wall Mount



EOAOWM-BK/BZ
Ovation Adjustable Wall Mount



EOH-BK/BZ
Ornamental Hinge



EOHIND-BK
Ornamental Industrial Hinge

MLDD-BK
BOCA Approved Pool Latch

*Accessory images are not to scale.

EASTERN ORNAMENTAL ALUMINUM SPECIFICATIONS

EO Fence		EO Railing	
Posts	2" x 2" x 0.060" wall	Posts	2.5" x 2.5" x 0.120" wall 3" x 3" x 0.120" wall
Gate Posts	2" x 2" x .125" wall	Posts Base Plate	2.5" Post (4.25" x 4.25") 3" Post (4.75" x 4.75")
Rails (Top Wall)	1" x .055" wall (EOV 1.134" x .055" wall)	Top Rail	2.25"H x 2"W x MAX .090" wall
Rails (Side Wall)	1" x .082" wall (EOV 1.5" x .082 wall)	Bottom Rail	1.5"H x 1.25"W x MAX .050" wall
Pickets	5/8" sq. x .050" wall (EOV 3/4"sq. x .050" wall)	Pickets	.75" x .75" square x .050" wall
Pkt Spacing	3-15/16"	Pkt Spacing	3.86" MAX
Heights:	48", 54" and 60"	Heights	36" and 42"
Colors:	Black (BK) and Bronze (BZ)	Colors	Matte Finish Black

MATERIALS

Posts	6061 T6 Aluminum Alloy	Posts	6061 T6 Aluminum Alloy
Rails	6061 T6 Aluminum Alloy	Rails	6061 T6 Aluminum Alloy
Pickets	6063 T5 Aluminum Alloy	Pickets	6061 T6 Aluminum Alloy
Finish	DuPont Powder Coating	Finish	Interpon Powder Coating Reading, PA

FENCE GATES

Gate frames are welded and pickets are also welded at cross members for added strength	
Top and bottom rails match fence sections	
Gate uprights are 1-5/8" x .125" wall thickness	
Order matching 48" wide walk gate or 60" wide for double drive gate	
Accent gates available for each style	

EASTERN ORNAMENTAL FENCE POOL CODE REFERENCE GUIDE

STYLE	BRONZE	WIDTH	HEIGHT	= POOL CODE COMPLIANT (Check local BOCA building codes for official pool code requirements)			
				48"	54"	60"	72"
RESIDENTIAL 5/8" x 5/8" pickets (EO40V - 3/4" x 3/4" pickets)							
E04101-BK		72"	48"				
E04202BK		72"	48"				
E04200-BK		72"	48"				
E040V-BK/BZ	☐☐	72"	48"	☐			
E054202-BK/BZ	☐☐	72"	54"		☐		
E054200-BK/BZ	☐☐	72"	54"		☐		
E05202-BK		72"	60"			☐	
E05200-BK		72"	60"			☐	
E06202-BK		72"	72"				☐
E06200-BK		72"	72"				☐
INDUSTRIAL 1" x 1" pickets							
E06101IND-BK		96"	72"				☐

Strength • Elegance • Beauty

SUPREME QUALITY
TIMELESS DESIGN
THE PERFECT ACCENT

Eastern
**Ornamental
Aluminum**
www.EasternOrnamentalFence.com

Professional Fence Dealer



SHOWN: E04101-BK, 2" Posts, 2" Ball Caps (E0BC2-BK)

E04 PRODUCT BROCHURE 0219 • Eastern Fence ©2019 • All Rights Reserved.